

ACTpro 101 & 102 PCB format Door Stations

ACTpro 101 & 102 Description

ACT have launched two PCB format door stations for one and two doors. The ACTpro 101 (one door) and ACTpro 102 (two door) fit neatly into the ACTpro 200 metal casing or other suitable PSU's.

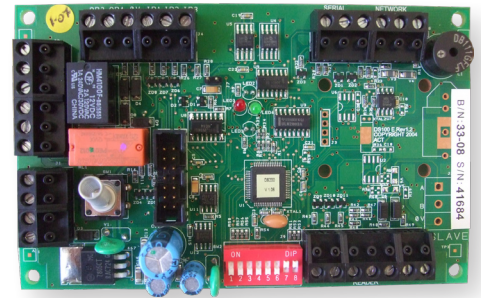
Designed with the installer in mind the ACTpro 101 and 102 door stations make installation a quicker and easier process. They are an ideal option when the available space is limited.

ACTpro 101 & 102 Features

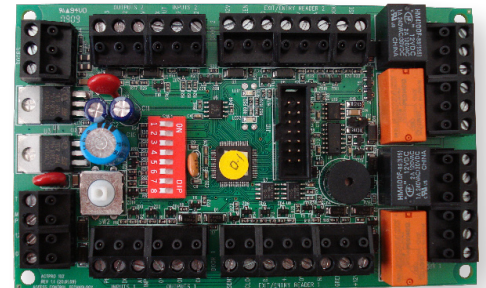
- PCB format door station for one (ACTpro 101) or two (ACTpro 102) doors
- facilitates the expansion of the ACTpro 2000 / 3000 from two to a maximum of sixteen doors
- up to 14 door stations to each ACTpro 2000 or ACTpro 4000
- programmable inputs and outputs per door
- auxiliary relay output per door
- requires 12 Volt DC supply

Ordering Codes

| | |
|---------------------------------|------------|
| PCB format, single door station | ACTpro 101 |
| PCB format, two door station | ACTpro 102 |



ACTpro 101 Door Station (one door)



ACTpro 102 Door Station (two door)

Product Specification

| | ACTpro 101 | ACTpro 102 |
|----------------------------|-------------|-------------|
| Operating Voltage | 12 V DC | 12 V DC |
| Consumption | 40 / 120 mA | 40 / 120 mA |
| Weight | 80 grams | 124 grams |
| Operating Temperature | -10 to +50C | -10 to +50C |
| Dimensions (H x W x D, mm) | 80x130x25 | 80x130x25 |
| Mounting | Inside PSU | Inside PSU |
| Installation | Indoor | Indoor |

Product Schematic (ACTpro 4000 two door controller with ACTpro Door Stations)

