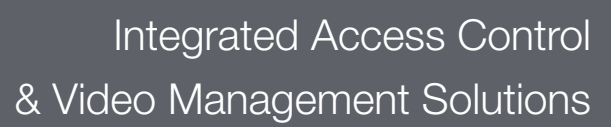


The logo for ACTpro, featuring the word "ACT" in a bold, white, sans-serif font, followed by "pro" in a smaller, lowercase, white, sans-serif font. The logo is positioned in the top left corner of the image, which has a diagonal orange background.

**ACT**pro

A photograph of a modern office interior. A person in a dark suit is walking from left to right, carrying a folder. The background shows a glass-walled staircase and a white wall. The image is overlaid with a large orange triangle in the top right and a large blue triangle in the bottom left. In the bottom right corner, there is a grey triangle containing the text "Integrated Access Control & Video Management Solutions".

Integrated Access Control  
& Video Management Solutions

The logo for ACT, featuring the word "ACT" in a bold, white, sans-serif font. The logo is positioned in the bottom right corner of the image, which has a grey background.

**ACT**



## Introducing ACTpro

ACT is dedicated to high-quality, reliable products, and a friendly, knowledgeable support staff. The ACTpro range offers a truly best-in-class access control experience. Working closely with security professionals, specifiers and end-users since 1995, we have developed the ACTpro range to address the needs of even the most demanding of access control situations.

Our solutions deliver seamless integration between access control, video management and workforce management applications.

For more information on ACT and the ACTpro range of products, don't hesitate to call us today.

**David Tymlin**

*Managing Director*

# Consultancy

ACT maintains a close relationship with installers, architects and specifiers. If you require consultancy, training or support on any aspect of a project, ACT can help. Our extensive market experience enables us to give you the best possible solution for your project, including bespoke advice and solutions.



## Technical Support & Training

ACT offer full sales and technical support to the installers and distributors of our products. In-house and on-site training is also available. End user training is also available.

Contact **[training@act.eu](mailto:training@act.eu)** for more details.

# ACTpro eLock

The ACTpro eLock is a versatile, battery operated wireless solution. The eLock can be easily and quickly installed on most door types and is compatible with the ACTpro range of hardware and software.

## ACTpro eLock Hub

**ACTpro eLock hub** is compatible with our existing range of network door controllers.



- » Control up to 32 locks from a single hub
- » Supports unlimited number of hubs on your ACTpro system
- » POE capability or 12v power supply
- » Auto-detects nearby locks
- » 60,000 users



# ACTpro eLock Features



## LONG RANGE

Long-range wireless technology, with up to 32 locks per hub.

---



## LONG BATTERY LIFE

Up to 3 years battery life or up to 200,000 operations of the lock.

---



## ALERTS

Visual and audible system health alerts.

---



## SAFE EGRESS

Always allows free-egress from the protected side of the door.

---



## KEY OVERRIDE

Available with or without key override for doors of 35mm-60mm in width.

---



## CARD TECHNOLOGY

Compatible with a wide range of card technologies - MIFARE, DESFire EV1 and RFID (125kHz).



# Access Control Controllers

Market leading technology,  
with a 5 year guarantee



## ACTpro 1500

- » Single door IP controller
- » Distributed intelligence
- » Built-in Web Server
- » Supports 15,000 users
- » Status LED's
- » Anti-passback
- » Interlock
- » Works with ACTpro Door stations (up to 32 doors)
- » Works with ACT Enterprise software
- » Networkable up to 4000 doors

# ACTpro 4000

- » Two door IP controller
- » Up to 16 doors using ACTpro door stations
- » 60,000 users
- » Over 1,000 user groups
- » Timed Anti-passback
- » Works with ACT Enterprise software
- » I/O module
- » Auto-discovery
- » Networkable up to 4000 doors



## Built-in PSU

ACT Controllers are also available with an in-built 12v DC PSU and room for back-up battery in a rugged metal container.

[www.act.eu](http://www.act.eu)



# ACT Enterprise

ACT Enterprise is a role-based access control software suite with three specialised modules based on user type.



## ACT INSTALL

**ACT Install** is used by the installer to set up controllers, readers and user profiles.



## ACT MANAGE

**ACT Manage** is used by system administrators to facilitate the many database changes required on a day to day basis.



## ACT MONITOR

**ACT Monitor** is used by the security guard to view and monitor alarm events.



# Features of ACT Enterprise

- » Full support for all ACTpro hardware
- » Wizards, Diagnostic and Emergency recovery functions
- » Sitemaps with Animated Icons
- » Design and Print ID cards
- » System Alarms
- » Activate and Deactivate intruder alarm
- » ACTviquet CCTV integration
- » Fire Alarm interface including muster report
- » 3rd Party integration with ACT API
- » ACTontime - Time & Attendance Integration



## ACT Enterprise Lite

If you require the security and reliability of ACT Enterprise, but don't need all the functions required for a larger professional installation, ACT Enterprise Lite is for you:

- » Single PC application
- » Manages up to 100 doors

[www.act.eu](http://www.act.eu)

# ACTpro Readers

Suitable for indoor and outdoor use, ACTpro readers are designed in a variety of forms and reader technologies

## ACT Access Readers

- » Proximity Card (1040) / Proximity and PIN (1050)
- » Formats Available - MIFARE, DESFire EV1, RFID (125kHz)
- » Surface or Flush mount readers
- » Tri-colour LED indication
- » Robust Polycarbonate Housing (IP67)
- » Compatible with all ACTpro Controllers
- » Keypad Backlighting





## IP Ratings Explained

- » 6 - Dust Tight
- » 7 - immerse up to 1m (for 30 minutes)

### ACT Mullion Readers

- » Slim-line reader
- » Formats Available - MIFARE, DESFire EV1, RFID (125kHz)
- » Compatible with all ACTpro Controllers
- » Vandal resistant cover available
- » Tri-colour LED indication
- » Robust Polycarbonate Housing (IP67)



### Panel Mount Readers

- » Easy to mount on single gang electric box
- » Sleek design
- » Versatile discreet design for any application

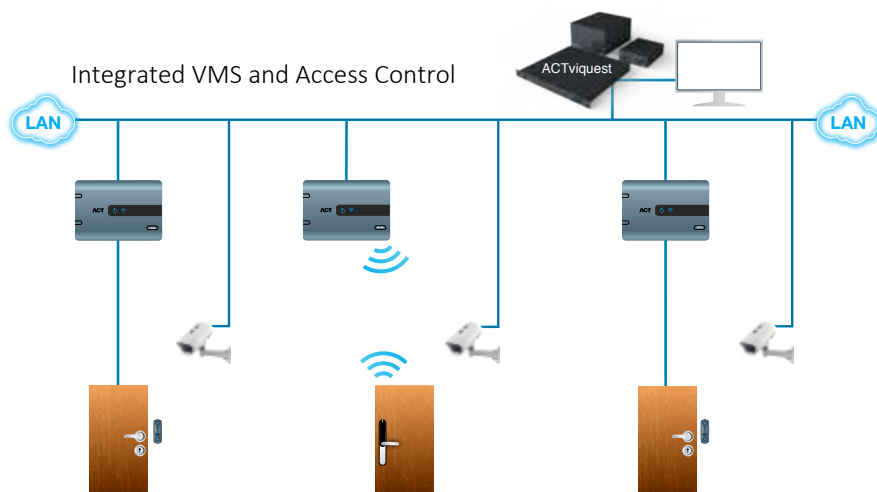


# ACTviquest

Integrated Video Management  
and Access Control

## Completely Integrated Solutions

Giving you control-room functionality, the ACTviquest system brings together your access control and video management systems into one easy to use interface.



- » IP and analogue cameras supported
- » Fast and easy export (DVD/AVI/Native)
- » Advanced Network and System Diagnostics
- » Built-in client software offers a single box solution
- » Unlimited Live viewing cameras
- » Interactive multi-level site maps

Supported cameras include:



Canon



BOSCH

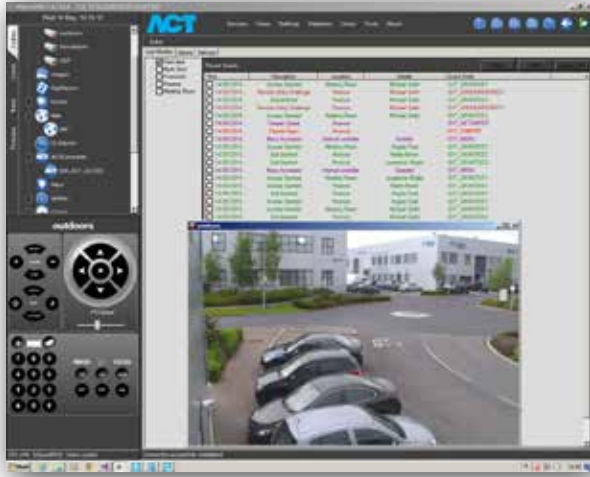
SONY

Panasonic

JVC

QANTZ  
PixeIPro

SAMSUNG



The ACTvquest comes in various configurations to suit your needs. The ACTvquest range is designed to cover applications from small commercial to large industrial complexes.

## ACTvquest

4TB, 8 channel entry level NVR with integrated access control, in a simple plug-and-play system. Ideal for small to medium systems.

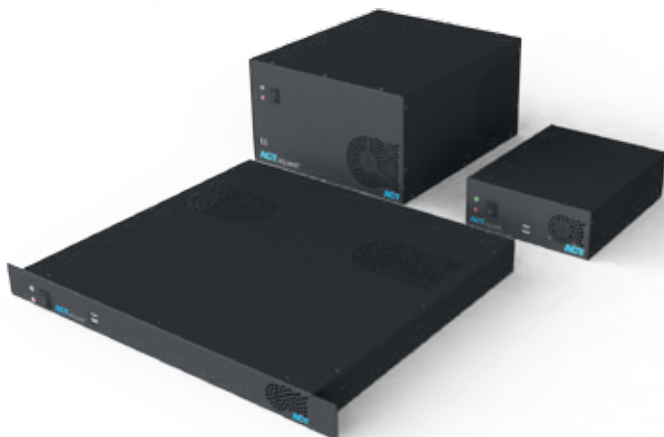
## ACTvquest+

16TB, 16 channel enterprise level NVR with integrated access control & advanced analytics. Ideal for medium to large systems.

## ACTvquest<sup>PRO</sup>

Enterprise level software only. Includes video wall and integrated access control. Unlimited solution.

All solutions are ONVIF supported.



For more information or to discuss more complex requirements please visit [www.act.eu](http://www.act.eu) or call Ireland on **00353 (0)1 4662570** or the UK on **0044 (0)161 236 9488** and speak to one of our sales staff who will be delighted to help you.

# Market Sectors

The ACTpro range is suitable for wide range of markets.



## HEALTH CARE

The flexibility of the ACTpro range allows you to easily manage public areas and permits access to restricted areas whilst preventing unauthorised access.

---



## COMMERCE AND INDUSTRY

Providing a safe environment for clients and staff is a top-priority for any organization. Ensure safe access and fire-safety with ACTpro access control.

---



## EDUCATION

High numbers of students and staff seek access to multiple public areas, offices, sports facilities and student accommodation. ACTpro MIFARE smart card solutions ensures you are using the most robust and secure technology for your campus in the most efficient way.

---



## TRANSPORT

With global threats to air and ground transport hubs ever present, real-time site-map monitoring by security staff will help ensure safety of staff and the public. ACT Enterprise software offers a scalable, multi-site solution.



Commercial



Hospitals



Industrial



Education



### GOVERNMENT AND MUNICIPAL

The highest level of security is required for Government buildings, Military installations, Police Stations and Courthouses. The ACTpro range will ensure the highest level of protection against card-fraud and security breaches.



### CONSTRUCTION

Harsh environments which face many immediate dangers and extreme weather conditions, construction sites will benefit from the robust housing and waterproofing of the ACTpro range of readers.



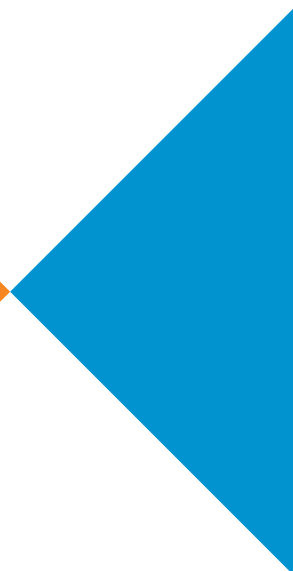
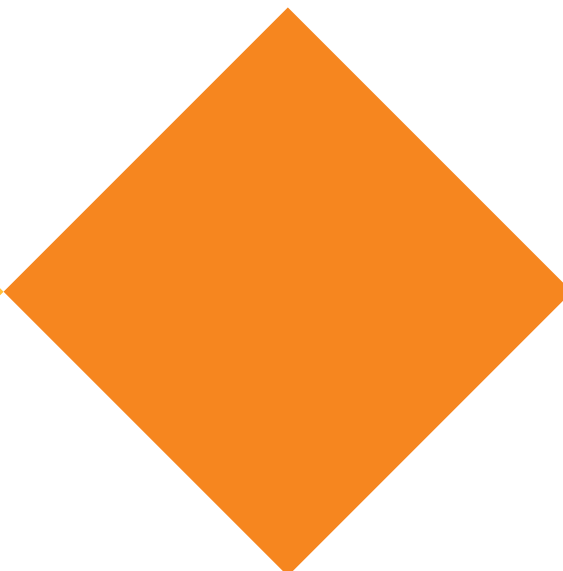
### LEISURE AND RECREATION

From tens of thousands of people in your stadium on match day, controlling access from secure pitch-side areas, or a small fitness centre, using entry and exit records for payment and membership, the ACTpro range is the versatile and reliable solution for you.



### RETAIL

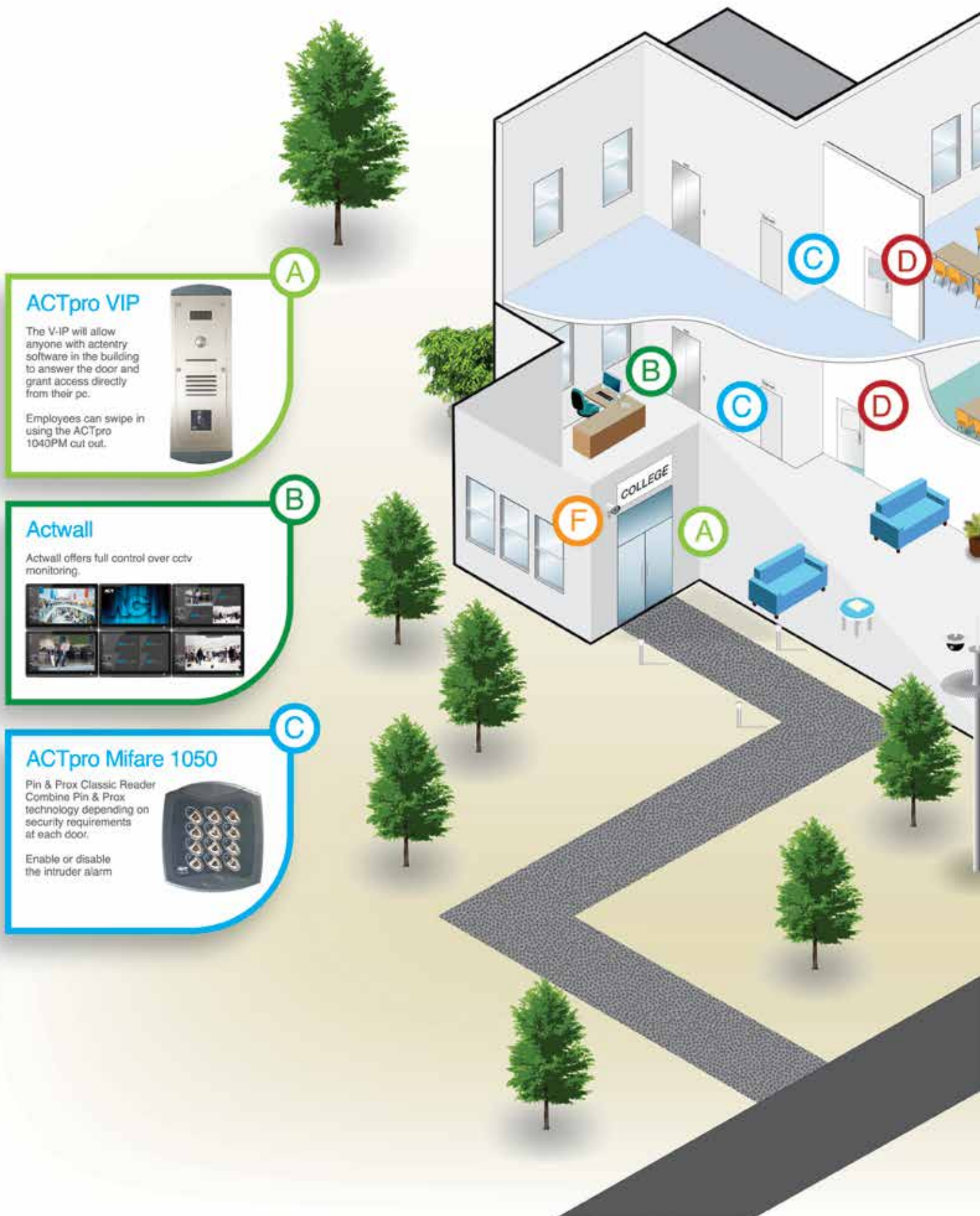
Interlock systems controlling access to cash-offices, securing high-ticket items in stock areas, controlling supplier personnel and vehicle access can all be fully integrated using the ACTpro range.





# Educational Complex

## Deployment Example



### ACTpro VIP

The V-IP will allow anyone with actentry software in the building to answer the door and grant access directly from their pc.

Employees can swipe in using the ACTpro 1040PM cut out.



### Actwall

Actwall offers full control over cctv monitoring.

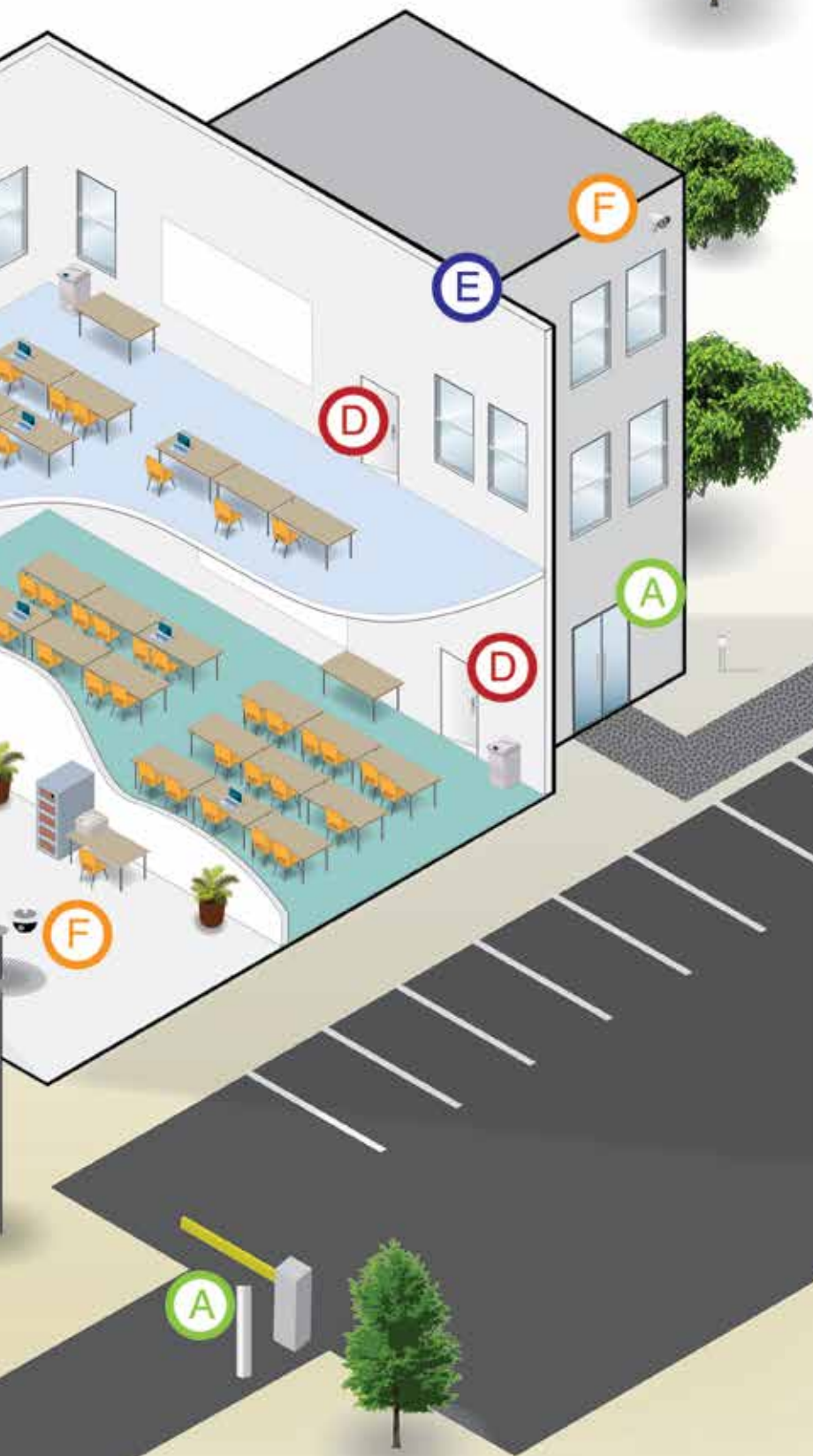


### ACTpro Mifare 1050

Pin & Prox Classic Reader  
Combine Pin & Prox technology depending on security requirements at each door.

Enable or disable the intruder alarm





D

### ACTpro eLock

Long range wireless lock - communicates with ACTpro eLock Hub. Available with various key over ride options. Long battery life - up to 200,000 activations.



E

### ACTpro eLock Hub

150m (line of sight) wireless hub for up to 32 ACTpro eLocks.



F

### ACTvquest

The latest in video management and access control integration.

Increase protection of your business, assets and your employees

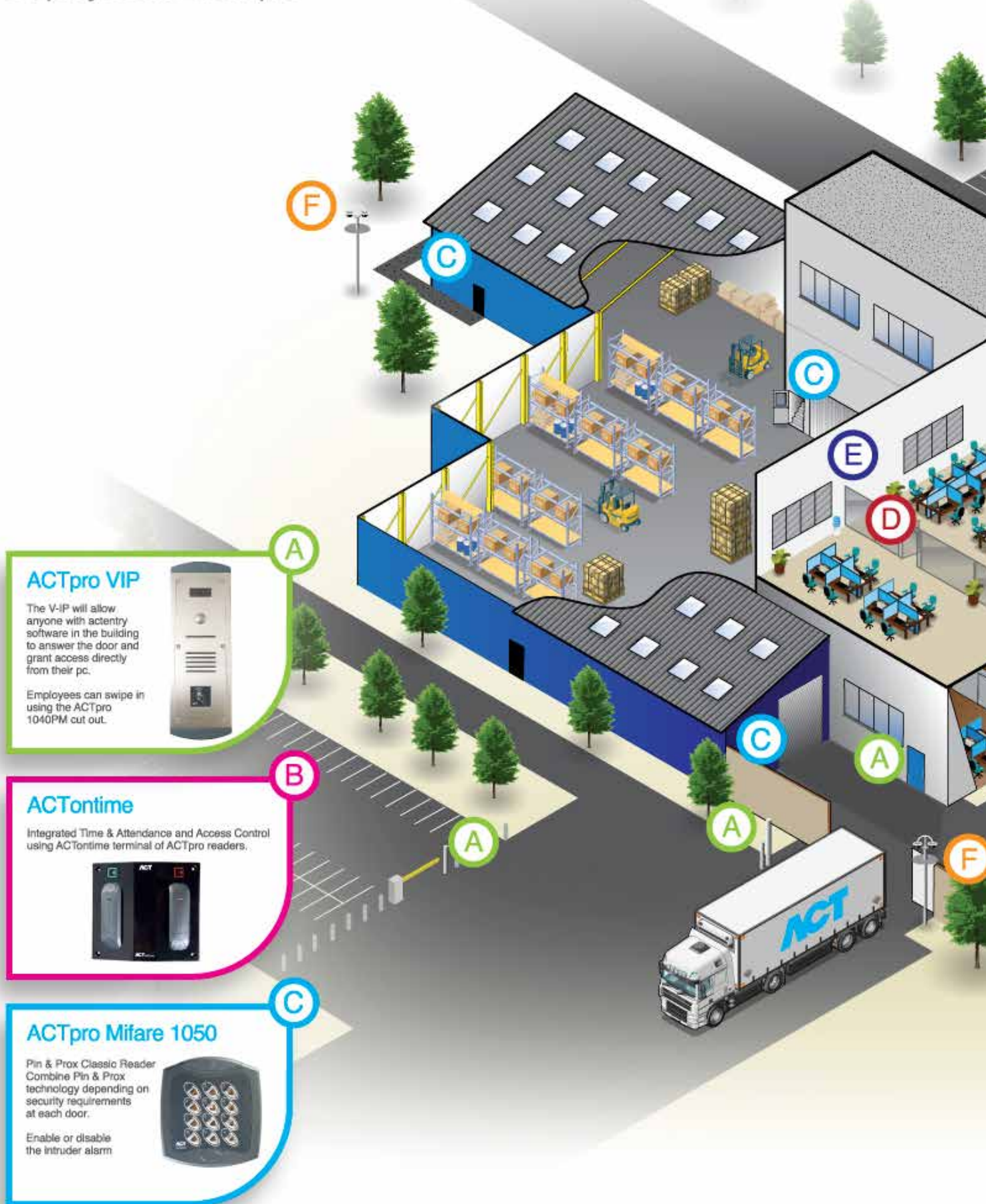


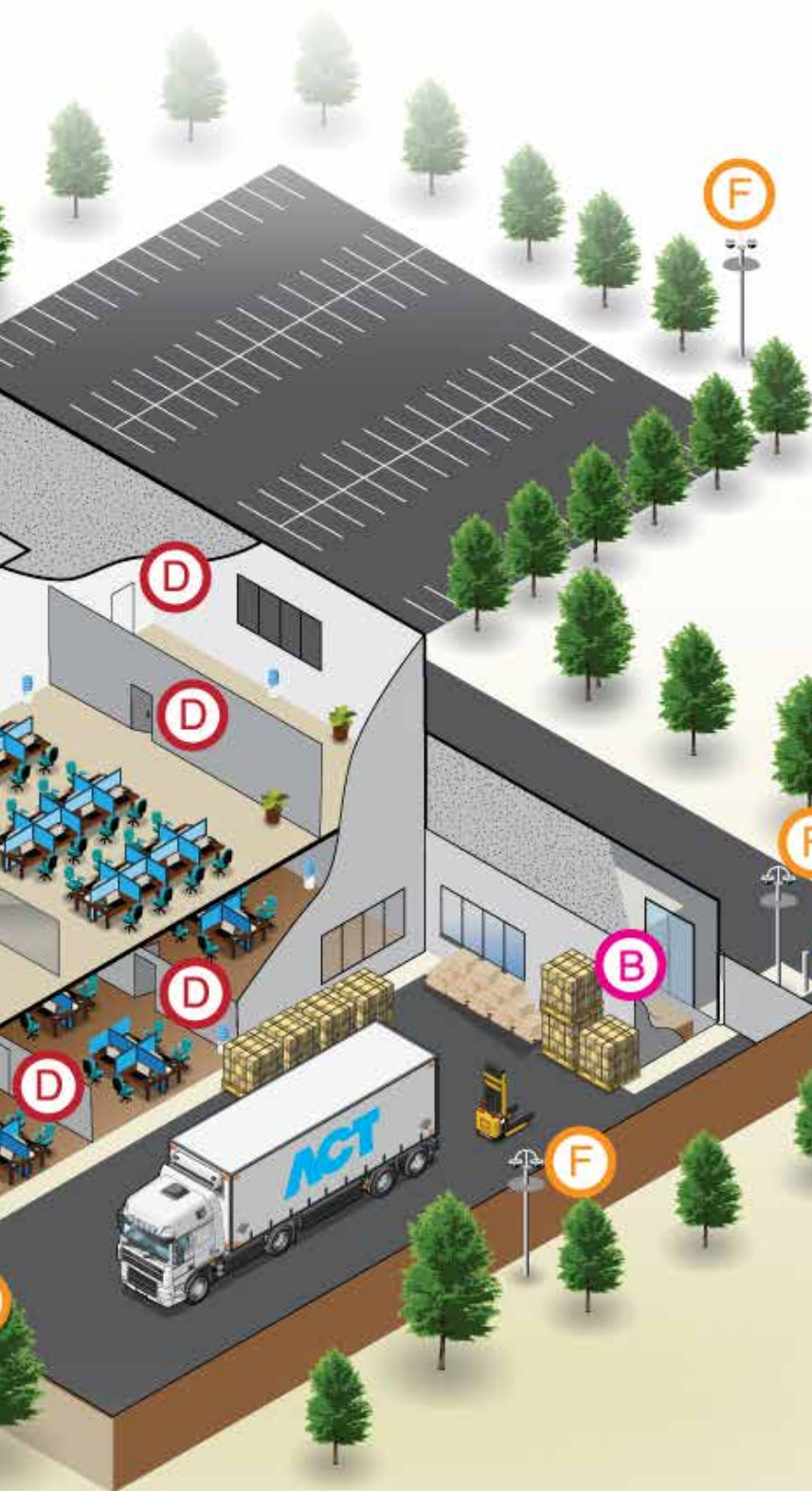
# ACT



# Industrial Complex

## Deployment Example





D

### ACTpro eLock

Long range wireless lock - communicates with ACTpro eLock Hub. Available with various key over ride options. Long battery life - up to 200,000 activations.



E

### ACTpro eLock Hub

150m (line of sight) wireless hub for up to 32 ACTpro eLocks.



F

### ACTvquest - Control

The latest in video management and access control integration.

Take full control of your on-site security with multi-functional software.



# ACT



# ABOUT ACT

Access Control Technology Ltd. (ACT) provides high quality access control, work force management and video management solutions. Our highly experienced engineering teams continue to deliver innovative and reliable products on a continuous basis.

## TECHNICAL SUPPORT

ACT's technical support team provide assistance to our network of installers and providers.

Visit our website **[www.act.eu](http://www.act.eu)** for more information.

## HOW TO BUY?

All our products are made available through our network of distributors throughout the EMEA region.

For more information, contact **[sales@act.eu](mailto:sales@act.eu)**



Ireland Office  
Unit C1, South City Business Centre,  
Tallaght, Dublin 24, Ireland

United Kingdom Office  
Beehive Mill, Unit 2C, Jersey Street  
Manchester, M4 6JG

**Ireland:** +353 (0)1 466 2570

**UK:** +44 (0)161 236 9488

**Email:** [info@act.eu](mailto:info@act.eu)

**[www.act.eu](http://www.act.eu)**

**[www.actcloud.net](http://www.actcloud.net)**

---

All ACT hardware is **ISO9001** and **CE certified** by independent external certifiers.

# ACT