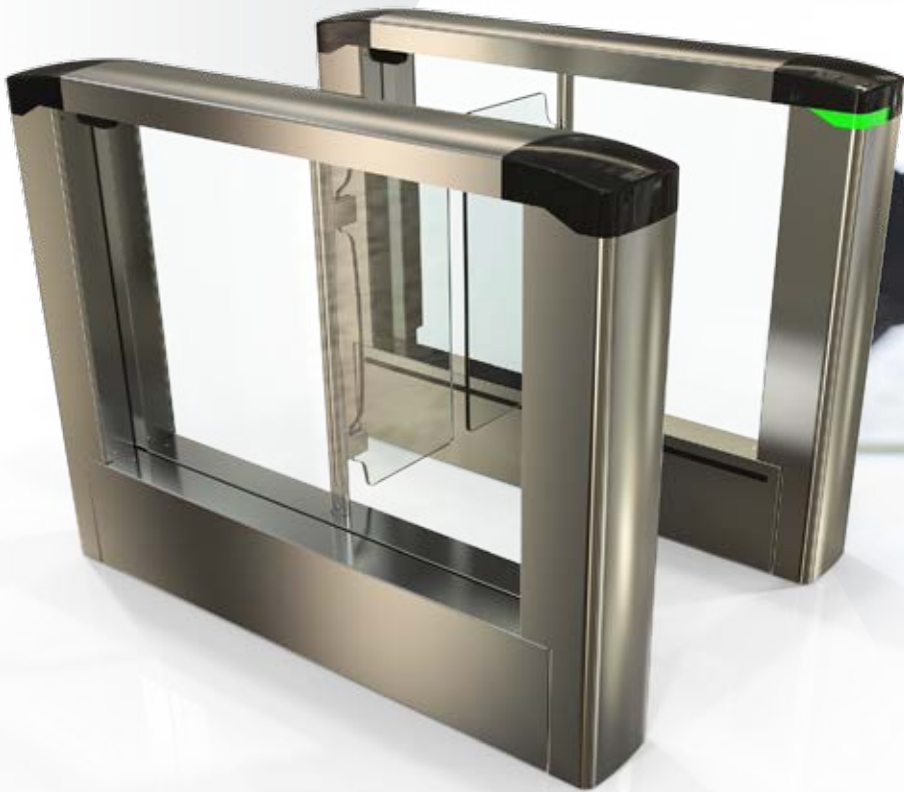




FI FirstLane

**SECURITY
TURNSTILES**

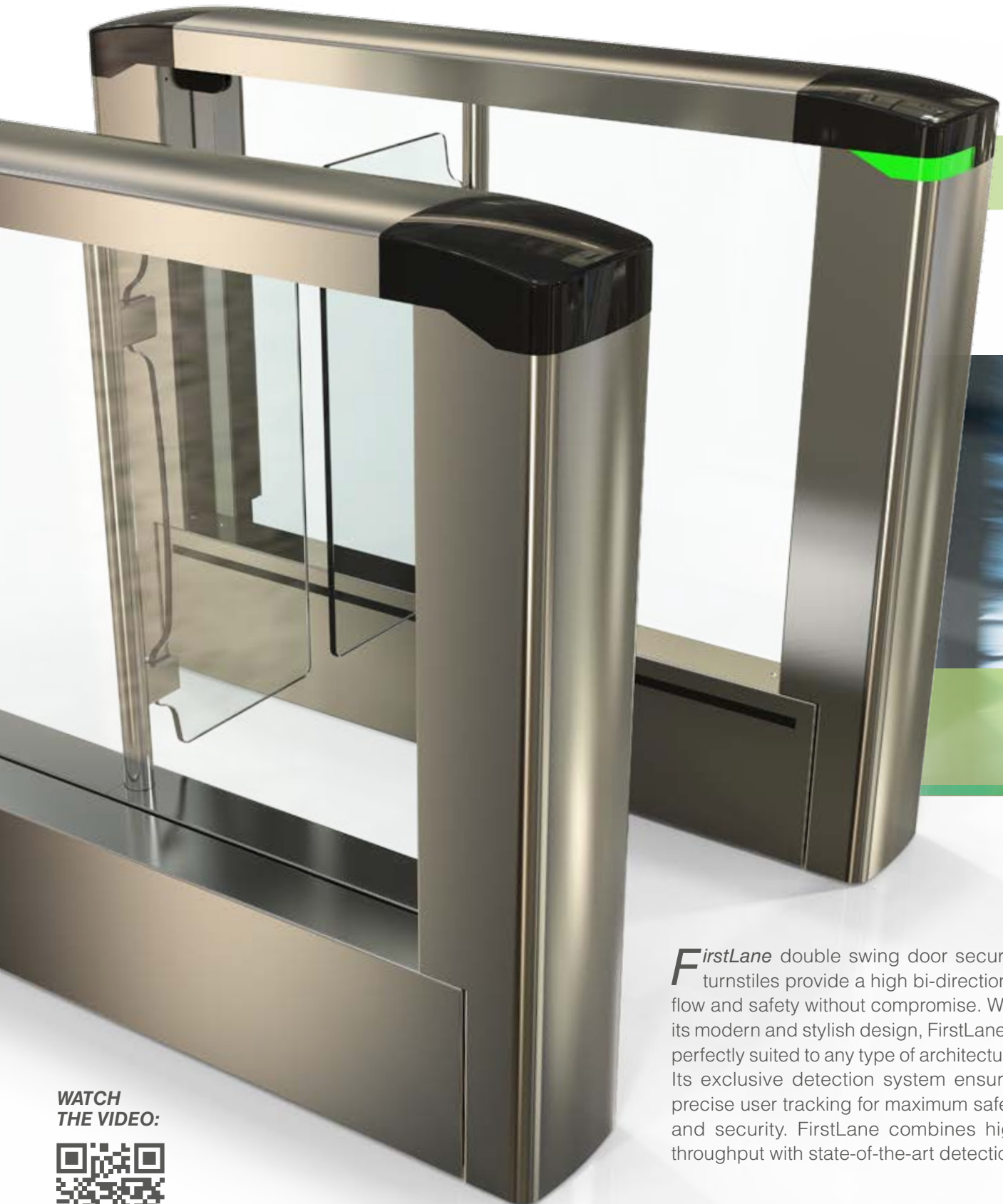


Access controlled...
Future secured.

 PEDESTRIAN

AS AUTOMATIC
SYSTEMS
EVR GROUP

F FirstLane



*F*irstLane double swing door security turnstiles provide a high bi-directional flow and safety without compromise. With its modern and stylish design, FirstLane is perfectly suited to any type of architecture. Its exclusive detection system ensures precise user tracking for maximum safety and security. FirstLane combines high throughput with state-of-the-art detection.

WATCH
THE VIDEO:



BEST IN CLASS SECURITY TURNSTILE

**Great Value
High Quality
User Safety**

Low cost of ownership

RELIABILITY

World leader in speed gates

Guarantee of Automatic Systems quality



BENEFITS

Reduced need for manned entrance

Easy to install

Low energy consumption for a low carbon footprint

Banks and insurance companies

MARKETS

Office buildings, head offices and administrative sites

Government buildings and institutions

Schools, universities and colleges



> ROBUST

STEEL FRAME

- Robust and stable
- RoHS anti-corrosion zinc plating treatment
- Housing is in AISI 304L stainless steel

SIDE PANELS

Clear 8mm thick tempered monolithic glass

OBSTACLES

Clear 10mm thick tempered monolithic glass obstacles



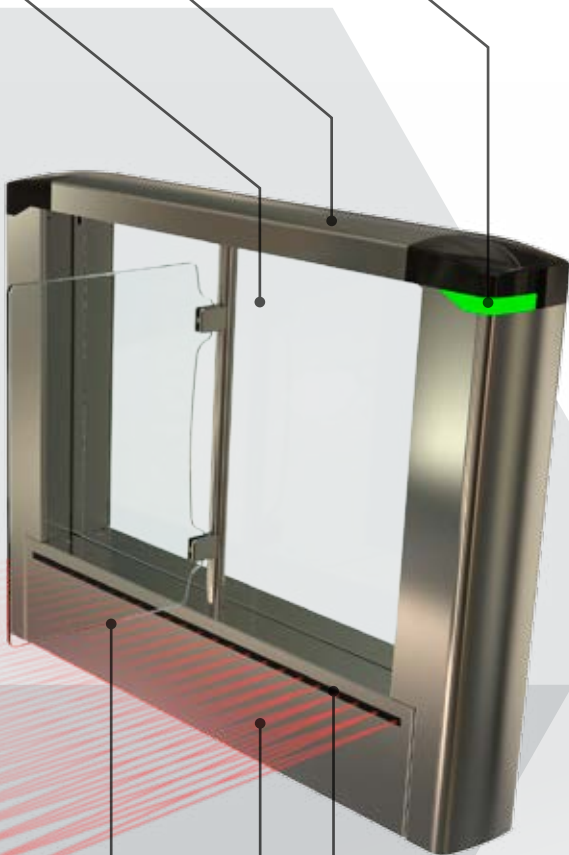
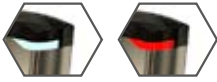
> CONNECTIVITY

- **TCP/IP COMMUNICATION** enabled by embedded software allowing real-time monitoring and equipment configuration locally or remotely via a simple web-browser as well as a diagnostic tool for complete maintenance.
- **INFORMATION TRANSFER BY:**
 - Ethernet interface (XML/RPC software)
 - Dry contacts (passage authorised, passage information, fraud, technical default...)
- **SMART N' SLIM** monitoring panel for remote management of the turnstiles (optional): a true control centre, the Smart n' Slim monitoring panel manages multiple lanes, regardless of where the units are located. Smart n' Slim is a flexible command centre and allows for visualisation, control and consultation.

> AESTHETICS

- Modern and stylish look
- Brushed stainless steel housing

- **FUNCTION PICTOGRAMS** for intuitive use



Glass obstacles height: **910 mm**

> SAFETY

- **PREVENTS FINGER ENTRAPMENT** and other impacts
- **DYNAMIC, ELECTRONIC USER PROTECTION**
- **ELECTRO-MECHANICAL DRIVE UNITS** including:
 - Controller for progressive accelerations and decelerations of the obstacles, for smooth movement and enhanced user safety
 - Geared electromagnetic brake for locking of obstacles in the event of forced entry attempts
 - Sensor monitoring the obstacle position
- **EUROPEAN STANDARD SAFETY EN 16005:** requirements regarding the strength of trapping and impact energy



ISO 9001:2015

> THROUGHPUT

- Fast opening and closing of the obstacles
- Bi-directional movement



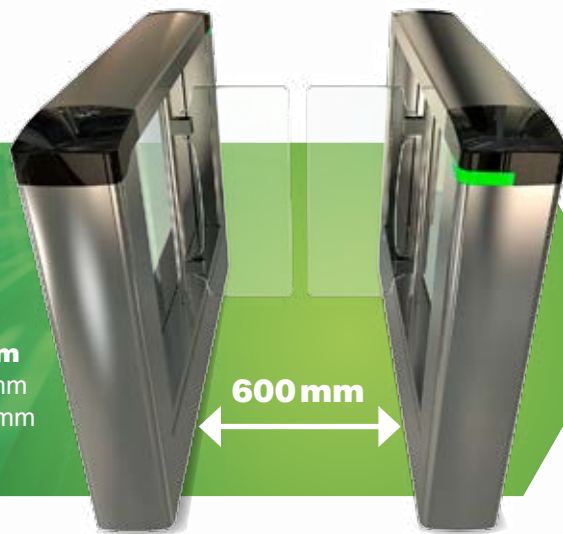
> SECURITY

- **BEST IN CLASS FOR ELECTRONIC DETECTION**
- **PROPRIETARY DIRAS DETECTION SYSTEM**
 - High-density matrix of infrared beams (every 22,5 mm) follows users' progression through the gate.
 - Dynamic and predictive (size, position, direction) algorithms ensuring top of the line performance for the detection of fraud: tailgating, piggybacking, trolleys, children, u-turn, crossing, multiple entries...



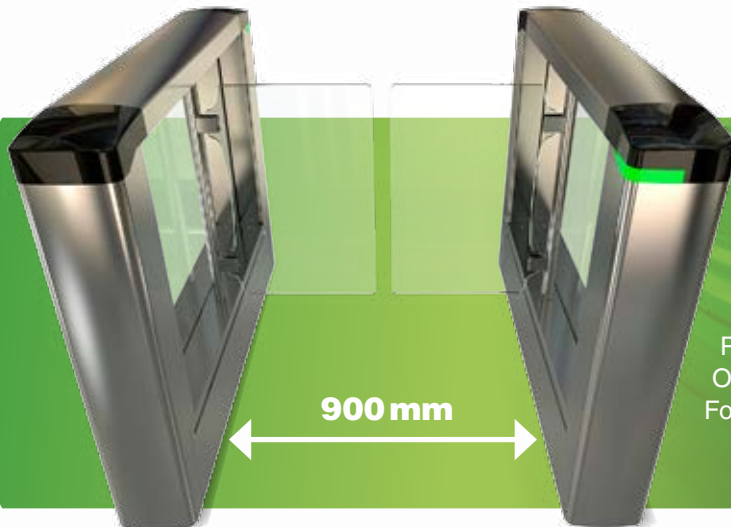
FIRSTLANE 960
> STANDARD LANE

Passage width: **600 mm**
Obstacle height: 910 mm
Footprint (W x L): 980 x 1300 mm



FIRSTLANE 970
> WIDE LANE

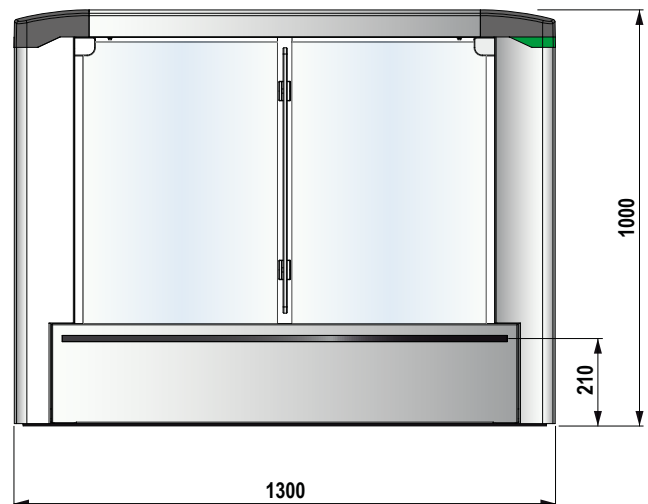
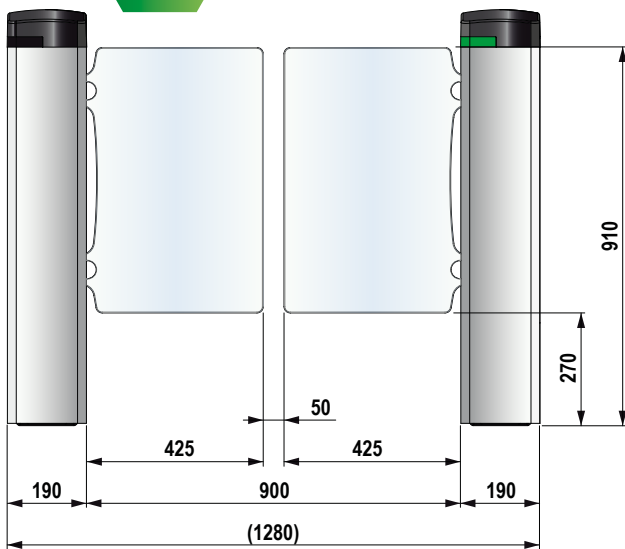
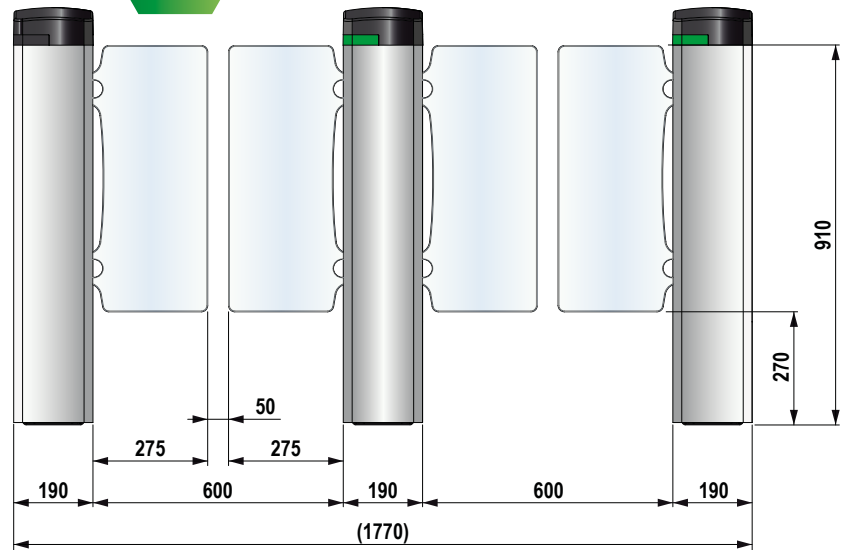
Passage width: **900 mm**
Obstacle height: 910 mm
Footprint (W x L): 1280 x 1300 mm



> **TECHNICAL SPECIFICATIONS**

Electrical supply	Single phase 110-240VAC (±10%) – 5A – 50/60Hz + ground
Power consumption	Standby: 20W Cycle: 35W Maximum: 80W
Motors (x2)	24 VDC – nominal output power 86W
Passageway (L)	FirstLane 960: 600mm / FirstLane 970: 900mm
Min opening or closing times	0.7s (depending of passageway)
Temperature range: operating	0°- 50°C
Humidity: operating	< 95%, no condensation
Noise level	55 dB
Weight	From 103 to 127 kg
IP	40
CE	Conforms to European standards

> **DIMENSIONS**
(mm)



WORK TO BE PROVIDED BY THE CUSTOMER

- Bolting the unit to the floor
- Power supply
- Cabling between gates in the same array
- Cabling to any external peripherals
- Integration of any accessories

Note: Comply with the installation drawing

PRECAUTIONS FOR USE

- For security reasons, children must be supervised by an adult at all times when in the vicinity of the unit and during passage through the lane.
- A child must always precede the accompanying adult when lane passage is required.

With a constant view to adopting the latest technological developments, Automatic Systems reserves the right to amend the above information at any time.



vehicle, pedestrian and
passenger access systems
for over 40 years



HEADQUARTERS

Automatic Systems SA
Avenue Mercator 5 - 1300 Wavre
BELGIUM
T +32 (0)10 230 211
F +32 (0)10 230 202
Email: sales.asgroup@automatic-systems.com

Access controlled...
Future secured.

LOCAL OFFICES IN WORLD

FRANCE
T +33 (0)1 30 28 95 50 (Vehicle - Persan office)
T +33 (0)1 56 70 07 07 (Pedestrian - Rungis office)
Email: sales.fr@automatic-systems.com

SPAIN
T +34 (0)93 478 77 55 (Barcelona office)
T +34 (0)91 659 07 66 (Madrid office)
Email: sales.es@automatic-systems.com

UNITED KINGDOM
T +44 (0)1604 65 42 10
Email: sales.uk@automatic-systems.com

CANADA
T +1 450 659 07 37
Email: sales.ca@automatic-systems.com

UNITED STATES
T +1 516 944 94 98
Email: sales.us@automatic-systems.com

CHINA
T +86 512 538 30 561
Email: sales.cn@automatic-systems.com

Find our list of partners on our website
www.automatic-systems.com



Visit us:

