

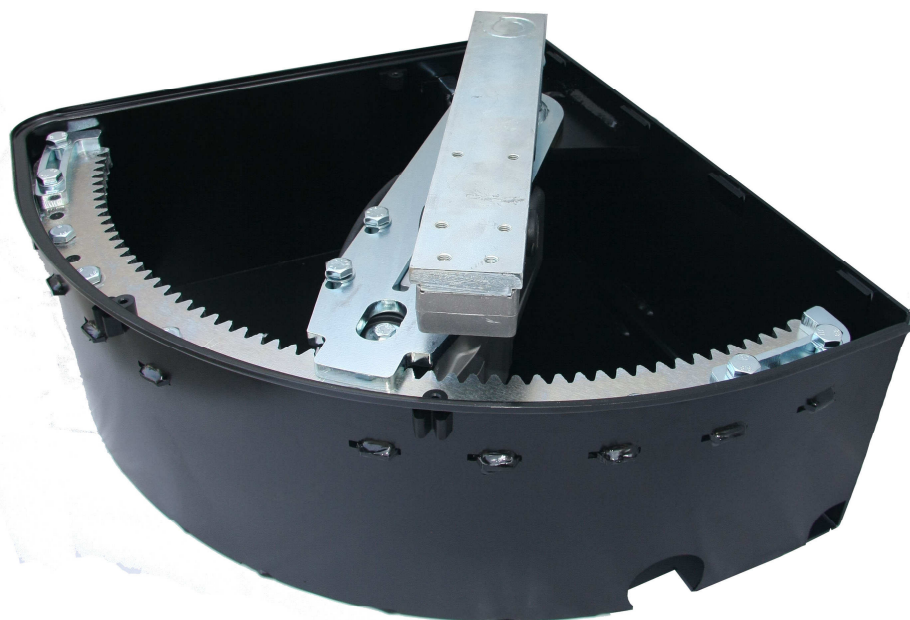
SERIE H21

**STRONG, MODERN, ENVIABLE
ALMOST INVISIBLE!**



UNDERGROUND AUTOMATION FOR SWING GATES UP TO 5 METERS PER LEAF.

Created by Roger an irresistible jewel of force, design and technology that represents the culture, the philosophy and the talent of Roger Company in developing products highly ergonomic, resistant and created for swing gates without changing the aesthetics of your entrance.





**PRECISE AND ADJUSTABLE
MECHANICAL STOP**

**UNIQUE MOTOR AVAILABLE TO
INSERT IN RIGHT AND LEFT
FOUNDATION BOX**

**STURDY RACK WITH
OPENING UP TO 105°**

**UNIQUE TRANSMISSION
LEVER WITH MOTOR SUPPORT**

**FOUNDATION BOX
FINISHED IN CATAPHORESIS
WITH LID**



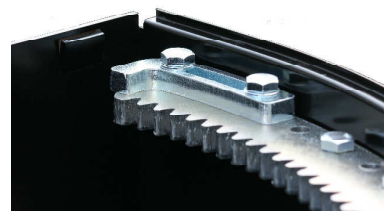
UNIQUE TRANSMISSION LEVER

Created with an unique long transmission lever, it allows to exploit all the available force steadily with a significant failures reduction of the mechanism.



LOW REDUCTION RATIO

Significant energy saving and higher yield thanks to the motor with low reduction ratio.



ADJUSTABLE MECHANICAL STOPS

The stop mechanism at the two ends of the rack is adjustable and can be fixed in different positions of it.

SERIE H21 THE PHILOSOPHY

THE UNDERGROUND AUTOMATION SYSTEM OF ROGER SECURE AND GUARANTEE THAT GIVES A NEW TOUCH OF FORCE TO THE AESTHETICS OF YOUR ENTRANCE.

H21 300/500 is the new powerful underground system of Roger, born for all kinds of swing gates: with an unique one or two leafs up to 5 meters length.

Thanks to its design, engineering and its sturdy foundation box, the new motor can be used with the maximum efficiency in any condition, specially for gates with large dimensions and with an intensive use.

H21 SERIES: A GREAT WORLD OF ADVANTAGES

The operating principle allows to obtain the maximum sensibility and precision during the movement in all the positions of the distance, because the absorption of energy of the motor is directly proportional to the force applied to the gate.

Design to resist to different underground installation conditions, H21 was born thanks to the choice of the best raw materials available and to the use of construction techniques that allow its application in all kinds of needs.



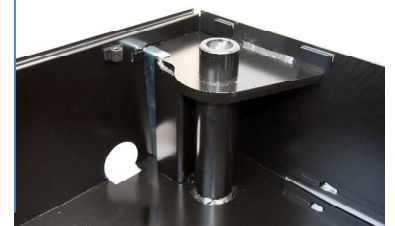
PRODUCT RANGE SERIE H21

H21/300	Underground system 230 V AC standard – for swing gates up to 3 meters per leaf
FU300DX	Right foundation box for H21/300 made of steel finished with cataphoresis and galvanized lid
FU300SX	Left foundation box for H21/300 made of steel finished with cataphoresis and galvanized lid
FU301DX	Right foundation box for H21/300 made of steel finished with cataphoresis and INOX AISI 304 steel lid
FU301SX	Left foundation box for H21/300 made of steel finished with cataphoresis and INOX AISI 304 steel lid
RL730	Release system for H21/300
H21/500	Underground system 230 V AC standard – for swing gates up to 5 meters per leaf
FU500DX	Right foundation box for H21/500 made of steel finished with cataphoresis and galvanized lid
FU500SX	Left foundation box for H21/500 made of steel finished with cataphoresis and galvanized lid
FU501DX	Right foundation box for H21/500 made of steel finished with cataphoresis and INOX AISI 304 steel lid
FU501SX	Left foundation box for H21/500 made of steel finished with cataphoresis and INOX AISI 304 steel lid
RL750	Release system for H21/500

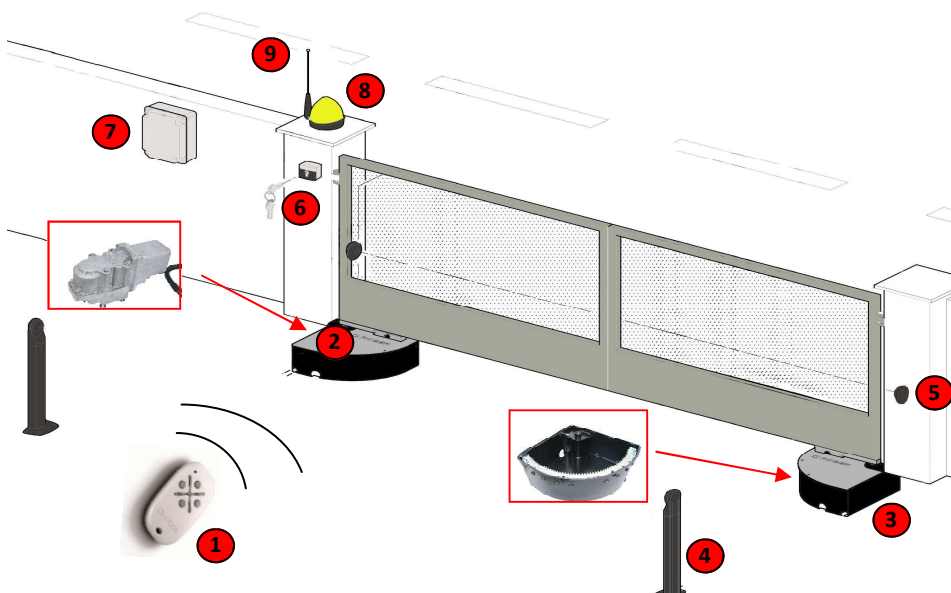


BORN TO BE A PERFECT SAFE FOR FOUNDATION

The foundation box of H21 series represents the most and the strong soul of the product thanks to its shape and materials. Made of steel with considerable thickness, it is finished with cataphoresis to avoid oxidation problems. The foundation box is supplied with cold galvanized lid or INOX AISI 304 steel lid.



TIPICAL INSTALLATION SUGGESTED BY ROGER



LEGEND

- 1) Remote control
- 2) Underground motor
- 3) Foundation box
- 4) Internal photocell
- 5) External photocell
- 6) Key selector
- 7) Control unit
- 8) Flashing light
- 9) External antenna

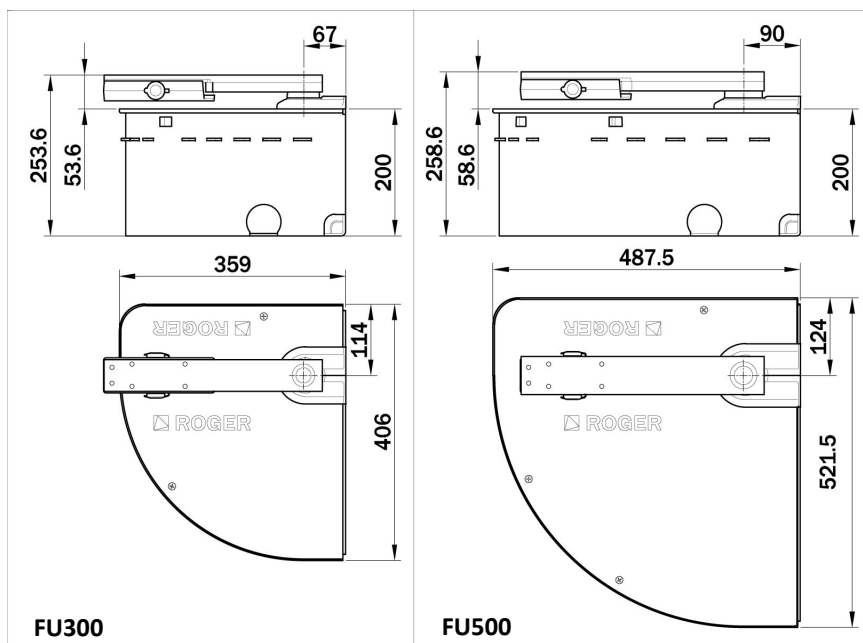
Caution:

The diagram is provided for informational purposes only, to define which of the Roger products fits the best your needs. This diagram does not represent any installation.

Technical Features SERIES H21

DESCRIPTION	H21/300	H21/500
Power V (50/60 Hz)	230VAC 50/60 Hz	230VAC 50/60 Hz
Current	1,1 A	1,5 A
Power rating	200 W	300 W
Intermittance	30%	30%
Maximum thrust	300 N	400 N
Working speed	1,66 Cm/s	1,66 Cm/s
Time in opening of 90°	19 s	19 s
Protection level	IP 67	IP 67
Motor protection temperature	140 C°	140 C°
Operating temperature	- 20 C° + 55 C°	- 20 C° + 55 C°
Leaf length	Max. 3 meters	Max. 5 meters
Foundation box dimensions (Length x width x height)	406 x 359 x 200	521,5 X 487,5 X 200

Dimension of SERIES H21



BARRIER FOR TOTAL PROTECTION

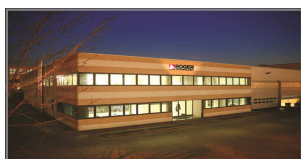
Thanks to the appropriate cover made of rubber, it is possible to develop a good barrier against the entrance of water or other external corps.



RAISED IRREVERSIBLE MOTOR 230V AC

The electric motor installed in the H21 series has been designed with 3 gears with a low reduction ratio. This ratio allows to increase of the quality of the performance and therefore a significant energy saving. Motor is fixed with screws in the position of the long lever, so it is raised and it is protected from connection with the water or any other external corps.

INFO ABOUT ROGER TECHNOLOGY



Thanks to more than 25 years of experience in the world of Home Automation, Roger Technology is one of the Italian leading companies in designing and production of integrated automation systems.

We invent, design, produce and supply automation systems for gates, garages and doors for the residential, commercial and industrial sectors.

ROGER[®]
TECHNOLOGY
automazioni evolute

ROGER TECHNOLOGY S.N.C.

Via S. Botticelli, 8 – 31021, Bonisiolo di Mogliano Veneto (TV) ITALIA P.

IVA 01612340263 Tel. +39 041 5937023

Fax +39 041 5937024

info@rogertechnology.it - www.rogertechnology.com