

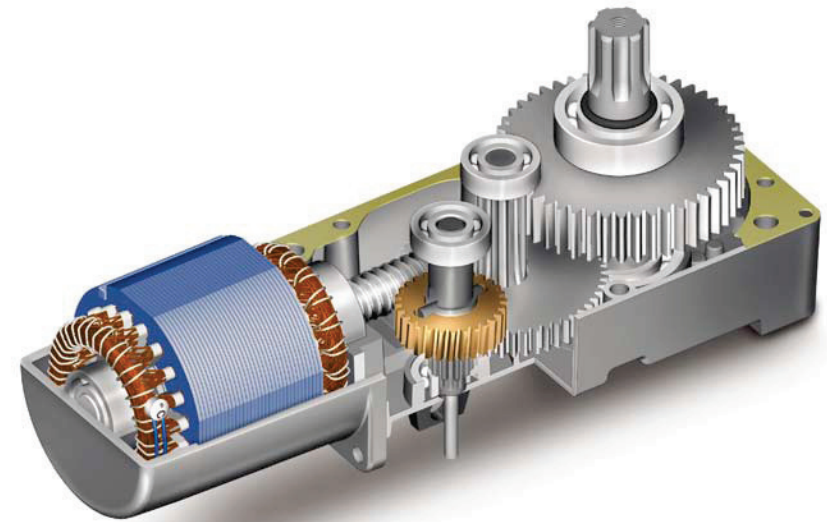


## “R23 style Roger Technology conceived with logic”



### MOVIMENT SAFE

Electro-mechanical reduction gear for swing gates for residential use up to 3,5 metres in width; ideal for gates with large posts, it comes complete with release handle with protected and customized key and is set up for external opening with pull cord. The main structure is in die-cast aluminium and the steel gears ensure lastingly constant and silent operation.



### RANGE R23 VERSIONS

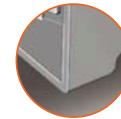
<b>R23/371</b>	230V • irreversible • gate stop • without arms
<b>R23/372</b>	230V • irreversible • gate stop • with STD shorts arms



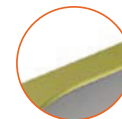
**PRECISELY CENTRED**  
All the housings of the bearings and the motor assembly are turned and ensure long-lasting constant, perfect and silent rotation.



**HARDENED STEEL**  
The two gears subject to most stress undergo heat treatment to make them strong and tough.



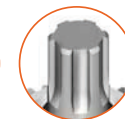
**STURDY AND RELIABLE**  
The load-bearing structure and the bearing housings are made in die-cast aluminium.



**PERFECT COUPLING**  
The two shells, meticulously milled and coupled with a gasket inserted between them, ensure perfect coupling and excellent grease tightness.



**STEEL**  
All the gears are in steel and mounted on ball bearings lubricated with fluid grease; this ensures no noise and maximum life.



**DRIVE**  
The transmission of movement is entrusted to the spline shaft with UNI 221 profile, which ensures excellent mating.



**1400 PERFECT AND SILENT REVSFOR MINUTE**  
2 special precision bearings for electric motors protected by double lip seals and lubricated for life with high temperature grease.

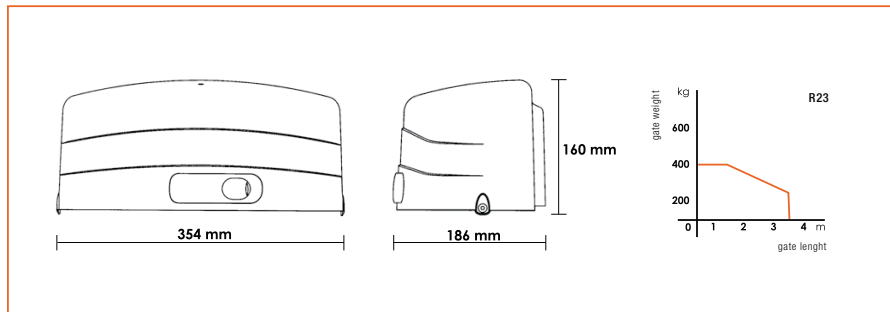
# R23

## R23

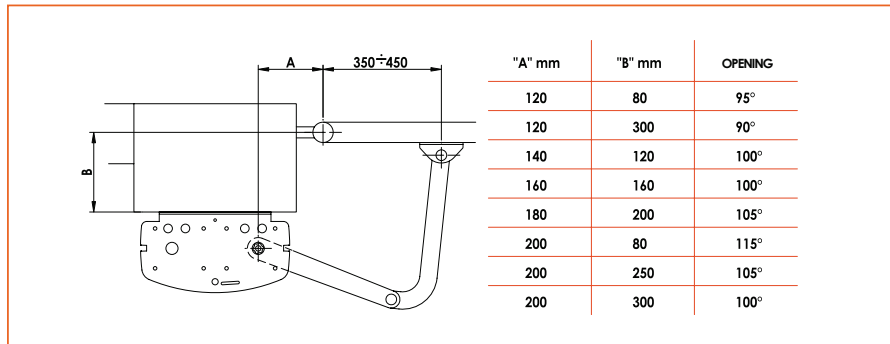
R23/371  
R23/372

POWER SUPPLY	V	230/50Hz			
RATING	W	200			
MAX THRUST	N	400			
PROTECTION RATING	IP	43			
DUTY CYCLE	%	50			
MOTOR OVERLOAD CUTOUT	°C	140			
WORKING TEMPERATURE	°C	-20+70			
ACTUATOR WEIGHT	Kg	15,5			
TIME FOR OPENING 90°	s	14			

## dimensions



## set up for standard installations



## accessories

