



**electro**

**Electro Automation Group**

## **Interlocking Door Systems**

Automatically protecting your staff and property

The **Electro Automation Group** is widely regarded as Ireland's premier automation specialist. Formed in Dublin in 1984, Electro Automation Group has since provided an enviable combination of quality equipment supported by exceptional technical after sales service.

## **Our Philosophy**

We Care. These two small words form the basic strategy for our business foundation. Being totally committed to the success of our clients allows us to grow in today's aggressive marketplace. Our ongoing investment in our personnel, premises, infrastructure, stock, and training allows us to offer a combination of products, sales knowledge, installation and technical support that is unparalleled. We have new purpose built premises in Dublin, Lisburn and Surrey, each of which contains state of the art diagnostics and technical support equipment. Business demands 24 hour service and readily available technical support, advice and spare parts. We provide this and more.

## **Our Promise**

When we provide a fixed quotation we guarantee that it is a workable solution. We protect your interests by ensuring that each project is completed with minimum disruption, and most importantly we stand over our products and very contract we complete. Our reputation and integrity are important to us.

**Choose wisely...choose Electro.**



## Interlocking Door Systems offer a proven method of providing additional security for vulnerable staff and premises.

Using proprietary section aluminium extrusions glazed with impact resistant glass, we can create a secure lobby inside virtually any entrance area. We then add our exceptionally reliable automatic door operators, and robust magnetic locks hold the doors in the required position. The addition of a duplex enabled intercom allows two way communications when required. The entire system is accurately controlled using a programmable PLC.

### The concept is simple.

On approach to the door, the user follows the clear instructions and pushes the green entry button. The door opens, they proceed into the controlled lobby, and once the entry door has closed, they can proceed from the control lobby to the premises. It really is that simple. However, the safety and operational protocols contained within the PLC allows staff to halt the process at any stage.

Transiting people can be allowed to enter or leave, or held in-situ. Uncontrolled entry and exit is impossible as one door will not open until the opposing door is closed. Each door is complete with clear and unambiguous user friendly instructions all compliant with current DDA requirements.

The intercom system allows staff to further help or provide instructions when needed. As entry and exit are visibly controlled, opportunistic robberies or attacks against staff are eliminated. The Entry, the Exit or all doors can be remotely opened, closed or locked by staff if required.

Options exist to have CCTV within the lobby area, providing a further deterrent. Staff will feel comfortable and secure in the knowledge that anyone entering or leaving the premises is fully controlled. The whole system is controlled by a PLC which can be programmed with operating protocols tailored to individual premises.

---

## The system is operated as follows:

In standby mode the “PUSH HERE” & “Disabled” buttons will be flashing. Both interlock doors are secured by overhead magnetic locks. Once the “PUSH HERE” button is pressed the other buttons (Disabled Buttons) will stop flashing and the red “WAIT” light will illuminate on all the other button clusters. The door will unlock and a local buzzer within the cluster will give an audible sound to proceed. The green “GO” indicator will also illuminate to give a visual indication that the door is unlocked. The user can push or pull the door accordingly.

The yellow button “WHEELCHAIR LOGO” is fitted at a DDA compliant height for disabled users. When this button is pressed the system will follow the same process as the “PUSH HERE” button but in addition the door will automatically open, pause and then reclose. Instructional signs are also fitted on the glass to advise people of the method of operation when using the interlock doors.

For communication, an audio intercom unit is ceiling mounted within the interlock to allow the Bank staff to communicate with a person from the intercom handset if required. A user can also press an assist button within the interlock that will also get the attention of Staff.

The lock is monitored, and a blue strobe light is mounted visible to bank staff. The light will operate in the event if either door or both doors do not lock. Staff also having full control of the operation of the interlock for security control on the console provided. The console is mounted at back of house and generally within sight of the interlock.

### The 5 modes of operation are:

1. Automatic - Default, only one door can open at a time.
  2. Unlock Doors - Doors are unlocked, Free Access.
  3. Locked Doors - No Access
  4. Unlock Inner door. Outer door remains with Push button control
  5. Unlock Outer door - Inner door remains with Push button control.
-

---

## PLC Control



Electro have been using Omron PLC's to control many different pieces of automated equipment. They are ideal for door interlock projects as they can handle multiple inputs and outputs on an intensive continuous basis. We have been using Omron PLC's for programming gate automation systems, traffic light control systems, access control systems and traffic barriers. They have been used in conjunction with some of our larger prison gate installations. They are ideal for intensive use and are easy to reconfigure or change should a client require modifications to the system.

## Electromagnetic Lock



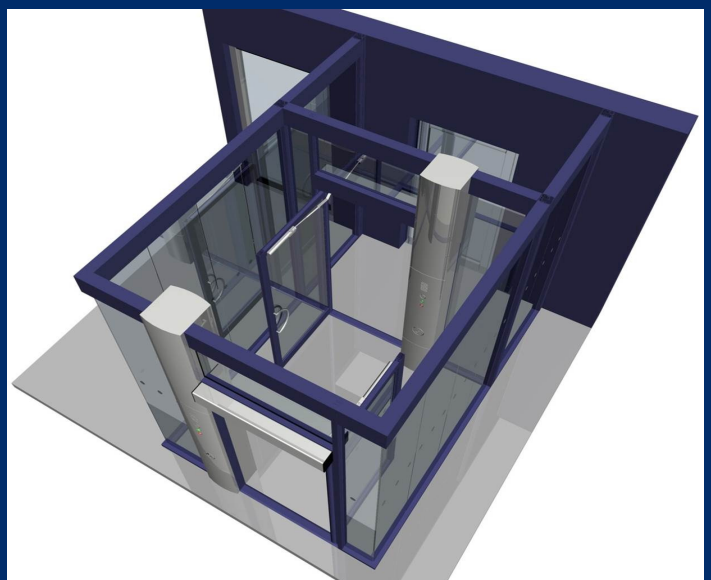
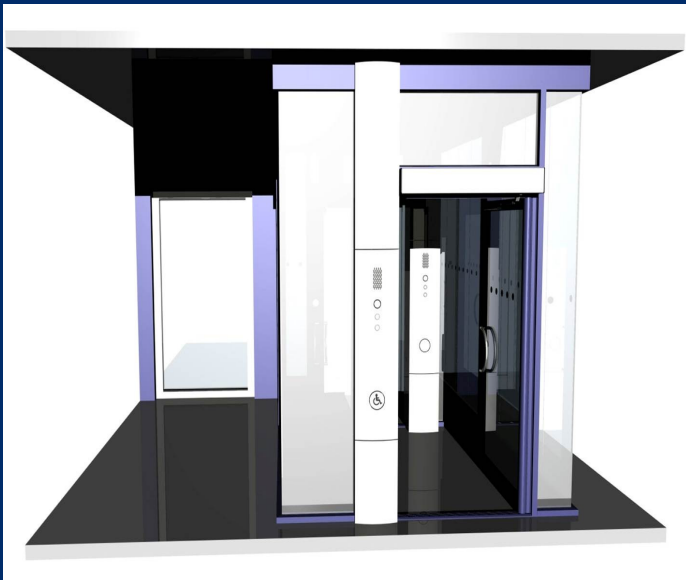
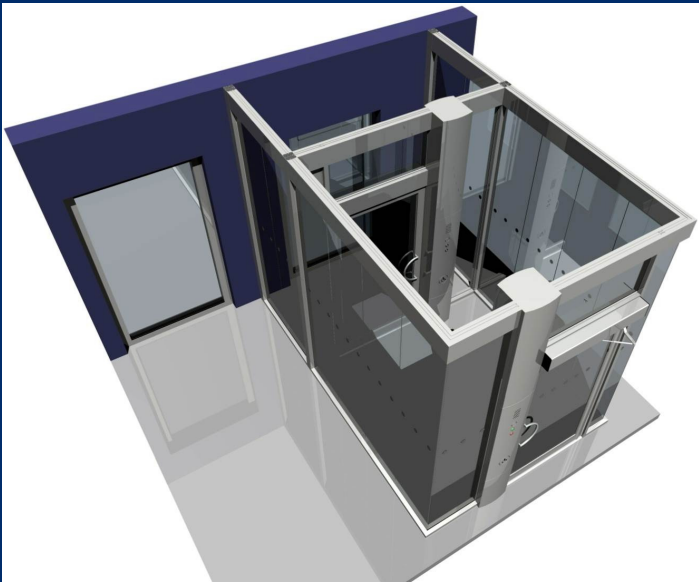
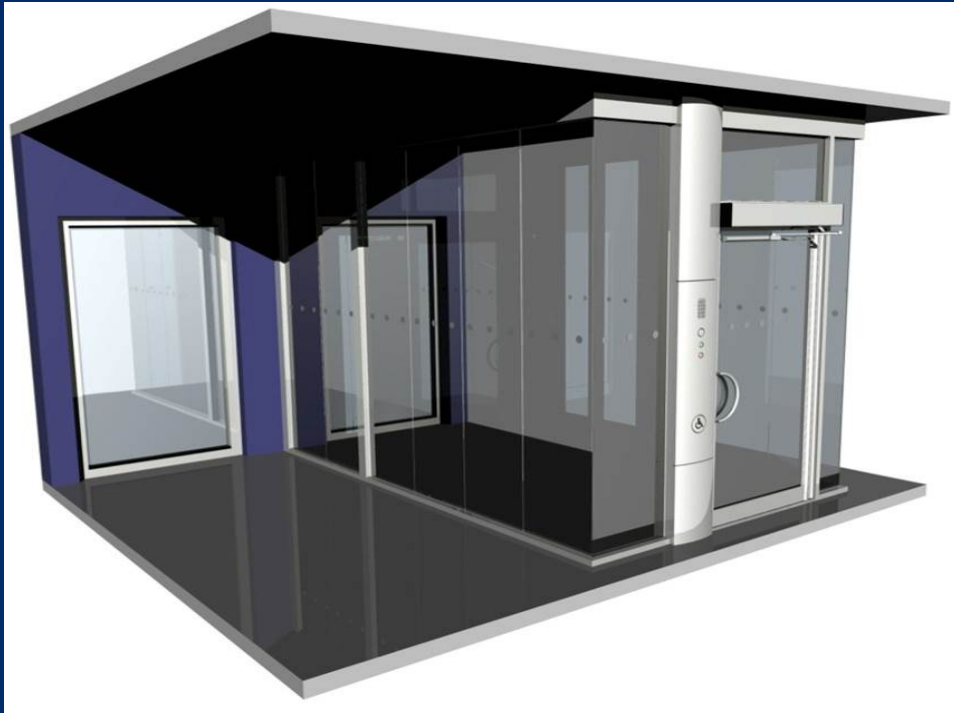
- Application - 500Kg holding force dual voltage, dual current
- Maglock for interior doors
- Dual voltage (12/24VDC) and dual current (AC/DC) operation
- Mounting plate provides easy and accurate installation
- Fail safe, but can be installed with a battery backup power supply
- Optional door position switch and anti-tamper switch

The Multi-Swing FA door operator is a fully automatic swing door operator. Its unique one way clutch mechanism allows the door to be opened manually with incredible ease.

The unit is non handed and therefore allows us to use the same model for all door applications, left / right handed and push / pull swing applications. It also has an adjustable heavy duty spring giving you the control over larger doors in tough environmental conditions and can have a motor close assist feature to help ensure that the door closes fully to allow the lock to engage.

It conforms to all the latest regulations and its user friendly digital technology and engineering simplicity, makes for continuous trouble free operation and service within this application.

---



---

## A new concept in Interlocking Door Systems is launched...

Offering the same tried tested and trusted security as the traditional Electro Automation interlocking door system, the Electro Secure Lobby acknowledges the need in some cases for a more striking solution. Using the knowledge gained from over 30 years of automatic door and access control, we have taken the operational concepts in our standard Interlocking Door Systems and have combined these with specialist input from the UK and Ireland's leading aluminium and glass suppliers.

The Electro Secure Lobby (ECS) is aesthetically pleasing while offering the same level of security of our traditional version. The new design includes an options pod which can incorporate additional devices such as SmartWater\*, Fog Bandit\* etc.

The options pod can also house integrated CCTV cameras.

As before, everything can be controlled via our PLC, offering exceptional flexibility.

\*Subject to approval and availability.

## Interlocking Doors

### Protect your employees and customers.

Electro Automation has nearly 30 years experience installing high security systems across most market sectors and state facilities such as:

- |   |   |
|---|---|
| <input checked="" type="checkbox"/> Embassies     | <input checked="" type="checkbox"/> Garda Headquarters & Stations |
| <input checked="" type="checkbox"/> Prisons       | <input checked="" type="checkbox"/> Airports                      |
| <input checked="" type="checkbox"/> Army Barracks | <input checked="" type="checkbox"/> Credit Unions                 |
| <input checked="" type="checkbox"/> Banks         | <input checked="" type="checkbox"/> Data Centres                  |

Electro Automation supply and install a full range of Interlocking Door Security Systems to suit every budget, from high-security financial institutions to the smaller scale company where cash handling risks may be an issue. Our systems come in a range of finishes which meets your security and operational requirements.

We also offer a premium back-up support and full maintenance after-sales service.

---



# electro

**Electro Automation Group**

**Quality Equipment**

**Exceptional Service**

#### **Electro Automation Ltd**

E.A. House, Damastown Industrial  
Park Mulhuddart, Dublin 15

**T** +353 1 824 6666

**F** +353 1 824 6655

**E** [sales@electroautomation.com](mailto:sales@electroautomation.com)

**W** [www.electroautomation.com](http://www.electroautomation.com)

#### **Electro Automation (N.I.) Limited**

Unit 21 Crescent Business Park,  
Lisburn, Co Antrim BT28 2GN

**T** +44 28 9266 4583

**F** +44 28 9266 3700

**E** [sales@electroautomation.co.uk](mailto:sales@electroautomation.co.uk)

**W** [www.electroautomation.co.uk](http://www.electroautomation.co.uk)

#### **EA Doors, England**

Units 20 and 21, Bookham Industrial  
Park, Church Road, Bookham,  
Surrey KT23 3EU

**T** +44 1372 459 536

**F** +44 1372 454 778

**E** [eadoors@ea-group.co.uk](mailto:eadoors@ea-group.co.uk)

**W** [www.revolvingdoorcompany.com](http://www.revolvingdoorcompany.com)