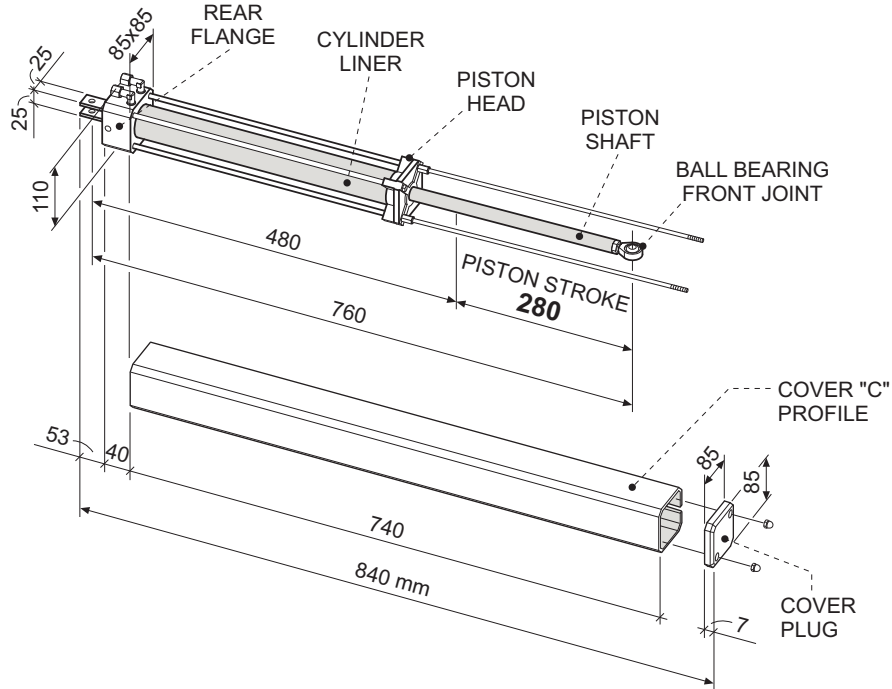
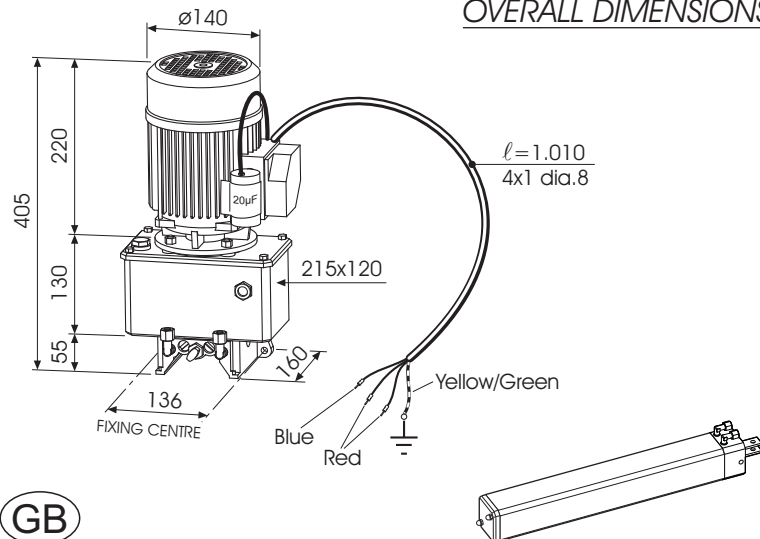


OIL-HYDRAULIC RAM OPERATOR OVERALL DIMENSIONS



HYDRAULIC MOTOR PUMP MEC 700/80 VENTIL

OVERALL DIMENSIONS



FADINI
the gate opener
Made in Italy



Drwg. No. **1108**

TECHNICAL DATA TABLE

07/14

MEC 800 is an electro-hydraulic operator designed to open/close solid panel doors and trap doors of large dimensions. By means of its dual structure, ie. motor pump assembly and ram operator, it can electrically operate gate weights up to 400 kg. Where heavier rating is required, it is possible to install two rams with one double-tank motor pump on each gate leaf, to operate gate weights up to 800 kg.

The air-cooled electric motor is suitable for heavy duty applications. The motor pump assembly is fitted with safety pressure valves and double locking device to hydraulically hold the gates in the open and close positions; override manual control is incorporated for hand operation in case of emergency. Connection of the motor pump assembly to the hydraulic ram operator is by means of rigid copper pipes to an oil shunting block, and by flexible hoses from the block to the ram to allow the angular motion of the gates.

MEC 800 is available in different options to meet the most various application requirements, and the range includes operators with the following features: non braking or braking on opening and closing cycles, bidirectional locking or reversible, with or without flow regulators.

MEC 800 can be connected to the Elpro control panel, an extremely reliable control unit, and can be remotely operated from a distance by a radio transmitter, customized on request, or by a key switch, the key can be also customized having different tothing options, or by a digital key pad; the system can be connected to safety devices such as mechanical cable-operated edges and photocells.

TECHNICAL SPECIFICATIONS

OIL-HYDRAULIC RAM OPERATOR

Piston stroke	280 mm
Piston diametre	50 mm
Shaft diametre	22 mm
Weight of Mec 800	5,5 kg
Dimensions (length x width x height)	840x85x110 mm
Max. gate weight per leaf	400 kg
Max. gate width per leaf	2,8 m
Thrust power	0 ÷ 7.000 N

MEC 700/80 VENTIL HYDRAULIC UNIT

P6 - Hydraulic pump capacity	1,6 l/min
Maximum pressure	40 atm
Oil type	Oil Fadini - Item 708L
Working temperature	-25 °C +80 °C (*)
Oil reservoir capacity	2 l
Static motor pump weight	10 kg
Protection standard	IP 65 (inside the enclosure)

(*) -40 °C with specific optional accessories (Ref. General Catalogue).

ELECTRIC MOTOR

Power output	0,37 kW (0,5 HP)
Supply voltage	230 Vac
Frequency	50 Hz
Absorbed power	510 W
Absorbed current	2,4 A
Motor rotation speed	1.350 rpm
Capacitor	20 µF
Intermittent service	S3

PERFORMANCE

Frequency of use	very intensive
Service cycle	opening ~ 28 s
	dwel ~ 30 s
	closing ~ 28 s
	dwel ~ 30 s
Complete cycle time	~ 116 s
Complete cycles	
Opening-Dwell-Closing-Dwell	No.31/hour
Annual cycles (with 8 hours of use per day)	No.90.520

NOTE: It is always recommended to install an electric lock with gate leaves wider than 2,0 m.

OIL-HYDRAULIC GATE OPERATOR
FOR OUTSIDE APPLICATION

stroke **280 mm**

MEC 800 SPECIAL

